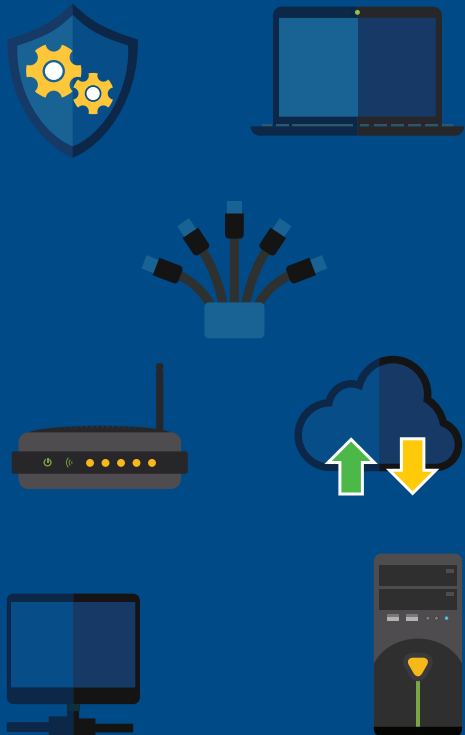




Central University of
Technology, Free State

ICT INFORMATION BOOKLET FOR FIRST YEAR STUDENTS

This booklet will help you to effectively use the CUT's computers, assist you to set up your account and provide useful information.



**Did you know that you can reset
your password?**

**Your initial password is P@ss and
your ID number, e.g.
P@ss9312545124000**

**REMEMBER: you have only one
username and one password.
This will give you access to
Ethuto as well as the student
admin portal.**

**You must first register your
password, and then reset the
password to be able to login to
the online portals.**

**Example of your student
username:
219313397@stud.cut.ac.za**



**Your username is also your
email address.**

HOW TO REGISTER YOUR PASSWORD

1. Open a web browser, and go to **www.cut.ac.za** click on the top blue banner on students, and select CURRENT STUDENTS.
2. Click on student password registration.
3. Sign in using your username e.g.: 219313397@stud.cut.ac.za
4. Your initial password will be P@ss and your ID number, e.g.: P@ss2011045100000
5. Add your cell phone number for the authentication phone. Make sure to select the region for South Africa.
6. Click on "text me". A verification code will be sent to your phone. Enter this code in the text box, and click verify.
7. Click finish.



RESET YOUR PASSWORD

1. Open a web browser, and go to **www.cut.ac.za** click on the top blue banner on students, and select CURRENT STUDENTS.
2. Click on student password reset.
3. Enter your username in the user id box.
4. Enter the characters from the picture into the text box and click next.
5. Click on "text my mobile phone", and enter your phone number in the text box, and click on text.
6. Enter the code that was sent to your phone in the text box, and click on next.
7. Enter a new password and confirm the same password.



STRONG PASSWORDS

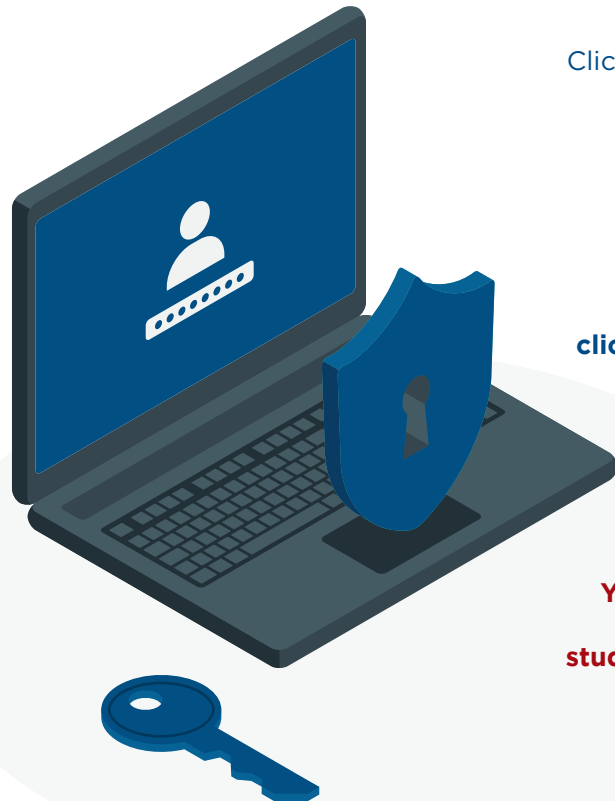
A strong password has minimum 12 characters.

The password includes numbers, symbols, capital letters and lower-case letters.

The password is not a dictionary word or yourname.

Do not disclose your password.

**EXAMPLE OF STRONG
PASSWORDS:**
sn00pDo33yd0\$
P@\$\$GOandCLct\$200



You have access to Office 365 which consists of Microsoft's Office suite.

To access Office 365, open a web browser and type the following address:

www.office.com

Click on the "sign in" button and enter your username and password.

To access your emails, click on the "Outlook" button.



**Your official email address will be your
student-number@stud.cut.ac.za**

Ethuto (Blackboard)

To access the Ethuto website, open a web browser, preferably Google Chrome and enter the following address

<https://ethuto.cut.ac.za>

The Ethuto platform is mainly used for the following:

- Study guides
- Shows all your modules you are registered for.
- Get and submit your assignments
- Show the due dates of your assignments
- Marks
- Announcements



SUPPORT



Please visit the helpdesk in the Student Academic Support building on the ground floor for support with usernames and passwords.

Hours: 08:00 - 16:30



Thinking Beyond



www.cut.ac.za